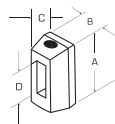


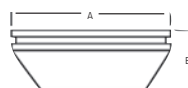
SLIDEBLOCK



Product #	Description	Length (in) (A)	Width (in) (B)	Depth (in) (C)	Internal Height (in) (D)
J4239SB	Slideblock	2-25/32	1-19/64	1-7/32	1-21/32



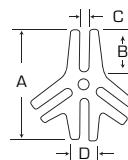
REVERSIBLE ADJUSTING NUT



Product #	Description	Overall Diameter (in) (A)	Height (in) (B)	Thread
J4250N	Reversible Adjusting Nut	2-1/2	1-3/32	7/8"-14 UNF



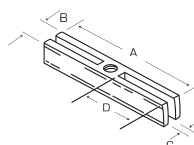
SLOTTED CROSSARM (2-WAY & 3-WAY)



Product #	Description	Length (in) (A)	Finger Length (in) (B)	Finger Internal Width (in) (C)	Finger External Width (in) (D)
J4205B	Slotted Crossarm (2-Way/3-Way)	5"	1-7/8"	25/64"	1-1/16"



SLOTTED CROSSARM THREADED 5/8" - 12 ACME



Product #	Description	Length (in) (A)	Width (in) (B)	Slot Width (in) (C)	Slot Depth (in) (D)
J4206SC	Slotted Crossarm Threaded 5/8"-12 Acme	6-3/4	1 Sq.	3/8	2-25/32

